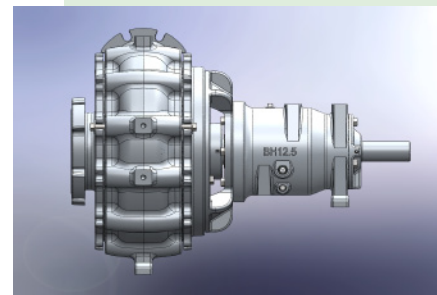




Pioneer Prime

PP86S20



Performance

Pioneer Prime - Vacuum Assisted Centrifugal Pump

Bare Shaft, Frame Mounted, Horizontal, Heavy Duty Solids Handling Pump

| | |
|----------------------|----------------------------|
| Size | 8" x 6" 200 x 150mm |
| Flow, Max | 4250 GPM 965 m³/hr |
| Head, Max | 600 feet 183 meters |
| Solids Handling, Max | 3" 75mm |
| Operating Speed, Max | 2000 rpm |
| Suction Connection | 8" 150 ANSI Flanges |
| Delivery Connection | 6" 150 ANSI Flanges |
| Lubrication | Oil STD Grease optional |
| Fasteners | Imperial |

Applications

Manure Slurry
Mine Dewatering
Lift Stations
Waste Water

PosiValve™ Patent #6,783,730 86LIT86S20_0912

High Flow, High Head & Solids Handling Capability

The 86S20 is a high pressure, solids handling pump designed to run over a broad range of performance and deliver outstanding suction lift.

In the standard Ductile Iron construction, the 86S20 will run smoothly across the full operating range.

The optional 27% Chrome Iron construction will carry slurries and abrasive materials with minimal degradation, reducing maintenance costs over the life of the pump.

UltraPrime™ Priming System

| | |
|------------------------|---|
| Priming System | Mechanically Driven Diaphragm Style Vacuum Pump |
| Air Removal Capability | 50 CFM, single chamber |
| Priming Chamber | Positive sealing air separation PosiValve™ with stainless steel float ball & linkage. |
| Discharge Check Valve | Swing Style - Cast Iron with Buna-n Disc |

Other Specifications

| | |
|-------------------|--|
| Mechanical Seal | Single type seal w/ tungsten carbide vs. silicon carbide seal faces, Viton® elastomers, 300 series stainless steel hardware and spring seal system designed for indefinite dry running |
| Pump End Bearing | Single double row ball bearing |
| Drive End Bearing | Double row angular contact bearings |
| Shaft | ASTM A630 17-4PH COND HT1150 SS |

Construction Materials Options

| | Standard Construction | CD4MCu Construction | Stainless Steel Construction | Hardened Metals |
|---------------|-----------------------|---------------------|------------------------------|-----------------|
| Impeller | CA6NM SS | CD4MCu | 316 SS | Available |
| Shaft | 17-4 PH | 17-4 PH | 17-4 PH | 17-4 PH |
| Wear Ring | Cast Iron | 316 SS | 316 SS | Available |
| Suction Cover | ASTM A536 65-45-12 | CD4MCu | 316 SS | Available |
| Volute | ASTM A536 65-45-12 | CD4MCu | 316 SS | Available |
| Brac-plate | ASTM A536 65-45-12 | CD4MCu | 316 SS | Available |

1800 PUMP RENTAL

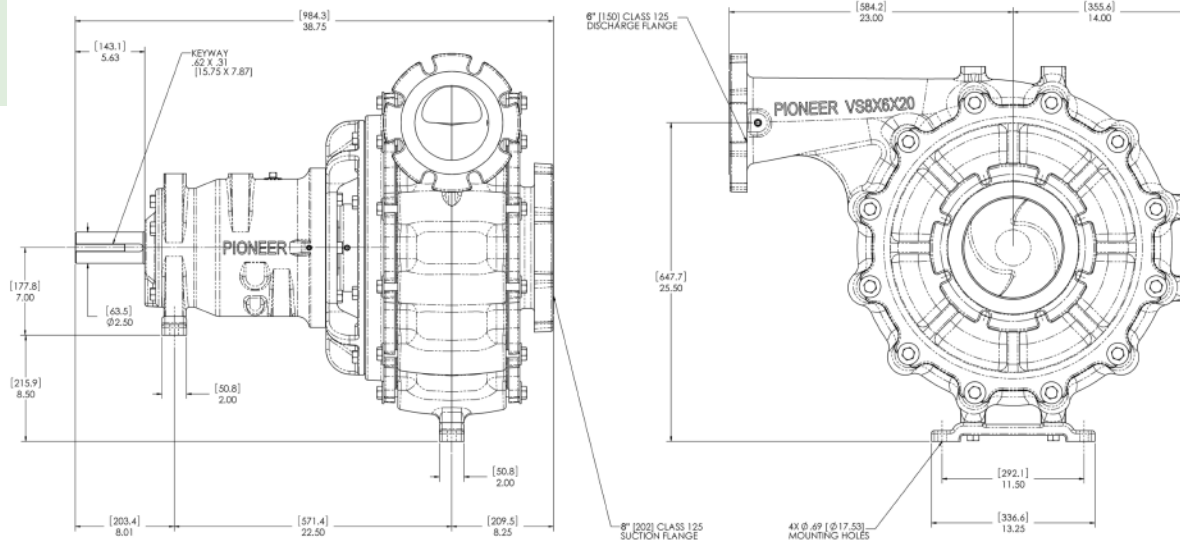
nationalpump.com.au | sales@nationalpump.com.au



Mechanical Dimensions

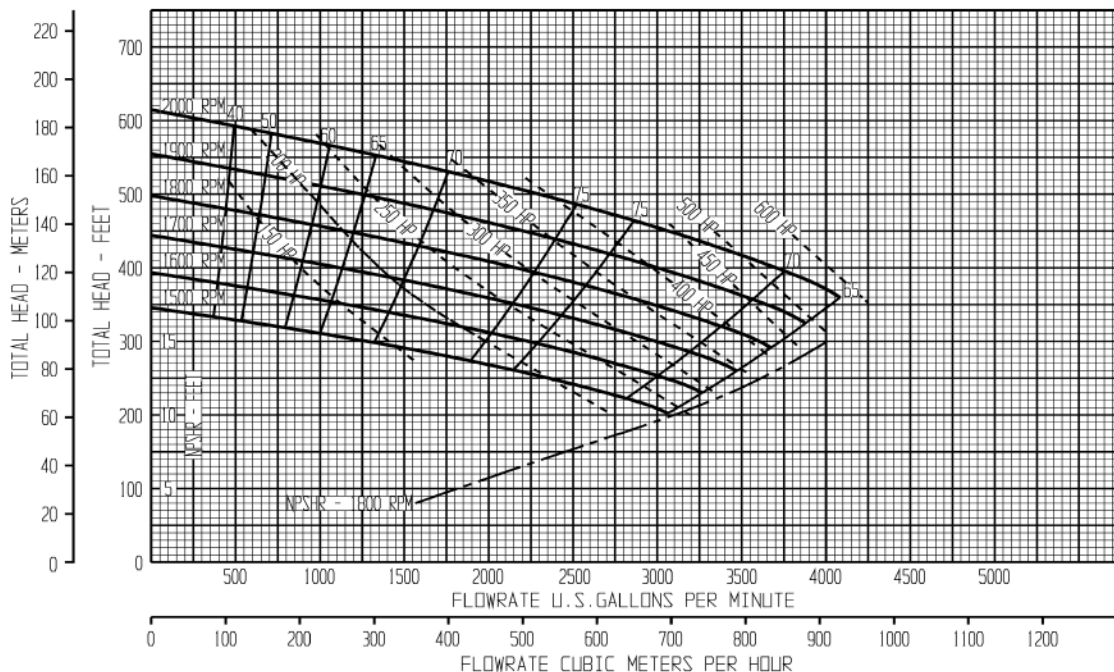


PP86S20



Performance Curve

| | | | |
|----------------|-------------------|-----------------|-----------------|
| MODEL: PP86S20 | IMPELLER DIA: 20" | SPEED: 2000 RPM | SOLIDS SIZE: 3" |
|----------------|-------------------|-----------------|-----------------|



Note: Performance shown is based on full CFD analysis performed by Simerics, Inc. on solid model provided by Pioneer Pump.

1800 PUMP RENTAL

nationalpump.com.au | sales@nationalpump.com.au

