



**NPE**  
NATIONAL PUMP & ENERGY

Ready  
For **Rent**

# CAPABILITY STATEMENT





Not only one of the largest ranges of specialised equipment, but also the most qualified professionals in pumping and power generation in Australia.

## COMPANYPROFILE

### ABOUT US

National Pump & Energy (NPE) provide pump, power and compressor hire equipment throughout Australia to the construction, mining, oil & gas, municipal, agricultural and industrial industries.

As a total solution provider, NPE also have fully qualified and experienced crews for onsite project installation and maintenance of all pumping and power generation requirements.

National Pump & Energy have a proven track record in delivering quality equipment solutions that focus on quality, reliability, safety and performance. We pride ourselves on delivering complete expert rental solutions, not just a piece of equipment.

The extensive range of Ready for Rent equipment is second to none in terms of suitability and reliability. This means a hassle free and cost effective solution for you. The fleet is built on strong partnerships with some of the world's best brands, giving you the ability to always get the best equipment for your job.

### HISTORY

Having been in operation for over 15 years, National Pump & Energy have a proven history of providing outstanding results in complex and demanding environments.

From humble beginnings, NPE has grown and evolved to become a leading Australian supplier with branches in Mackay, Brisbane, Newcastle, Perth, Kalgoorlie, Weipa and Darwin which service all parts of Australia.

**BASICALLY WHEN IT COMES TO PUMPING, POWER GENERATION AND COMPRESSED AIR EQUIPMENT, NATIONAL PUMP & ENERGY ARE YOUR TOTAL SOLUTIONS PARTNER.**



PUMPS, POWER & COMPRESSED AIR **SOLUTIONS**

1800 737 687

[www.nationalpump.com.au](http://www.nationalpump.com.au)

# »» LOCATIONS

National Pump & Energy branch network is strategically positioned to service all parts of Australia. These hire branches are supported by a team of NPE representatives and field service crews so that every part of Australia has access to the best equipment and service, regardless of location.

## HEAD OFFICE

3A/6 Innovation Parkway  
Birtinya QLD 4575  
T 07 5438 4300  
E [admin@nationalpump.com.au](mailto:admin@nationalpump.com.au)

## BRISBANE

32 Computer Road  
Yatala QLD 4207  
T 07 3382 0211  
E [brisbane@nationalpump.com.au](mailto:brisbane@nationalpump.com.au)

## DARWIN

21 Beresford Road  
Yarrowonga NT 0830  
T 1800 737 687  
E [darwin@nationalpump.com.au](mailto:darwin@nationalpump.com.au)

## KALGOORLIE

39 Broadwood Street  
Kalgoorlie WA 6430  
T 08 9068 1000  
E [kalgoorlie@nationalpump.com.au](mailto:kalgoorlie@nationalpump.com.au)

## MACKAY

24 Presto Avenue  
Mackay QLD 4740  
T 07 4998 9000  
E [mackay@nationalpump.com.au](mailto:mackay@nationalpump.com.au)

## NEWCASTLE

4 Balbu Close  
Beresfield NSW 2322  
T 02 4088 0100  
E [newcastle@nationalpump.com.au](mailto:newcastle@nationalpump.com.au)

## PERTH

276 Treasure Road  
Welshpool WA 6106  
T 08 6141 6500  
E [perth@nationalpump.com.au](mailto:perth@nationalpump.com.au)

## WEIPA

12 Iraci Crescent  
Evans Landing QLD 4874  
T 1800 737 687  
E [weipa@nationalpump.com.au](mailto:weipa@nationalpump.com.au)

**AUSTRALIA-WIDE FREECALL  
1800 737 687**

**[WWW.NATIONALPUMP.COM.AU](http://WWW.NATIONALPUMP.COM.AU)**



PUMPS, POWER & COMPRESSED AIR **SOLUTIONS**

1800 737 687

[www.nationalpump.com.au](http://www.nationalpump.com.au)



# HEALTH, SAFETY & ENVIRONMENT.

NPE's safety system is accredited to AS/NZS 4801, and ensures that we operate under formal documented policies and procedures that are compliant with worldwide best practices.

Our employees are committed to achieving the highest possible performance in Occupational Health and Safety in the workplace and we have a reward and recognition program for those individuals who continually exceed in this area.

NPE has a dedicated safety team to ensure that we meet the formal requirements of AS/NZS 4801, which include:

- ✓ Adhering to client and legislative requirements
- ✓ Conducting internal audits and inspections
- ✓ Hazard identification and management
- ✓ Formal investigation of all incidents
- ✓ Formal induction and assessment of staff and contractors
- ✓ Formal reporting to the board of directors



# » SERVICES

National Pump & Energy is a turn-key pumping, power generation and compressed air equipment solutions provider. Our dedicated and experienced team can assist you with all aspects of your project from site inspection through to system design, project costing, equipment selection, in-house construction – assembly, testing, installation, commissioning, maintenance, operation and/or complete project management, where required.

National Pump & Energy have the experience, capacity and most importantly, commitment, to assist you with your project anywhere in Australia.

## SERVICE DELIVERY

- ✓ Site assessment
- ✓ Fit for purpose system design
- ✓ Project management
- ✓ Short term equipment hire
- ✓ Long term equipment hire
- ✓ Equipment sales
- ✓ Installation, commissioning & operation
- ✓ Ongoing assessment of project requirements

## SUPPORT

- ✓ Comprehensive pre-hire inspection and maintenance
- ✓ 24/7 responsive field service
- ✓ Spare parts availability
- ✓ Fully equipped specialist workshops
- ✓ Qualified & experienced tradesmen.

## LOGISTICS

- ✓ Australia-wide branch network
- ✓ In-house and subcontracted logistics networks

## SERVICE MANAGEMENT

National Pump & Energy has an industry leading team of skilled pump and power professionals to custom design a solution for your requirements.

The detailed on-site (or remote if required) inspection and assessment will ensure that the designed solution will produce the most effective and reliable outcome whilst reducing potential delays and bottom line impacts.

## TAILORED EQUIPMENT SOLUTIONS

The key difference between NPE and other hire companies is that we offer tailored solutions and service, not just equipment. Our personal and detail oriented approach means that you can ensure that all project requirements will be met.



***“NPE was the only company we could find with both the plant and technical aptitude to provide the well-engineered solution we were provided with”***

Fitzroy River Water - Rockhampton Regional Council.





**KNOWLEDGE. EXPERIENCE. RELIABILITY.**

## » SERVICES



### Pump Hire & Sales

- Extensive range of all kinds of pumps
- Diesel & Electric
- Up to 1,000L/S & 200m head



### Generator Hire & Sales

- 6kVA - 1,250 kVA
- Starter panels
- Cabling
- Fuel pods



### Compressor Hire & Sales

- Complete range up to 1,600cfm and 500psi operational pressures



### Hydromining

- Popular for it's safe fast and cost effective method of discharging unwanted materials



### Groundwater Dewatering

- Wellpoint dewatering
- Deep well dewatering
- General site dewatering
- Water treatment and PH correction



### Mine Dewatering

- Emergency dewatering
- Planned dewatering
- Pump crews
- Pipeline construction
- Underground & open cut



### Bypass Pumping

- Water and wastewater applications
- Installation capabilities
- Flow monitoring



### Emergency Management

- 24/7 flood & disaster support
- Mine site recovery
- General site recovery
- Backup power solutions



### Oil & Gas

- Specialised oil & gas pump, power and air equipment
- Certified to international standards



### HDPE Pipelines

- Up to 1,000mm HDPE welding
- Butt, electrofusion and extrusion welding.
- Electronic weld logging
- Pipe & fitting supply



### Borefield Services

- Complete bore field pumping capability
- Bore pumps
- Remote monitoring



### Assisted Evaporation

- Fully automated operation
- Perfect for sites where discharging water off site is a problem
- Tailor made solutions



### Engineering & Design

- Computer generated designs.
- In-house engineering & design services



### Pumping & power system audits

- Site audits of pumping and power generation systems
- Assessment of efficiencies and site/job suitability



PUMPS, POWER & COMPRESSED AIR **SOLUTIONS**

1800 737 687

[www.nationalpump.com.au](http://www.nationalpump.com.au)



# EQUIPMENT



SILENCED PUMPS



SUBMERSIBLE PUMPS



SELF PRIMING PUMPS



SLURRY PUMPS



HYDRAULIC POWER UNITS



GENERATORS



DESSICANT DRYERS



STARTER BOARDS



WELDERS



EVAPORATION UNITS



COMPRESSORS



STAND PIPES



FUEL CELLS



WATER TREATMENT



HYDROMINING



SERVICE VEHICLES



MOBILE PLANT



TELEHANDERS



LIGHTING TOWERS



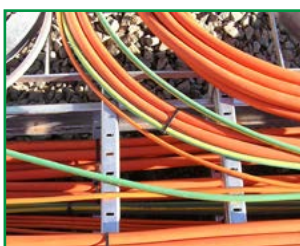
BREAK TANKS



PIPE & HOSE



WELDING EQUIPMENT



CABLES



PONTOONS



TELEMETRY



PUMPS, POWER & COMPRESSED AIR **SOLUTIONS**

1800 737 687

[www.nationalpump.com.au](http://www.nationalpump.com.au)





## » PAST PROJECTS



### » Bypass Pumping

**Location:** Rockhampton, Queensland  
**Solution:** Water bypass system designed and supplied to service the Rockhampton region whilst pump station maintenance was being conducted.  
**Equipment:** 8" Silenced pump packages, telemetry control, fuel cell, pipeline and hoses.



### » Wellpoint Dewatering

**Location:** Brisbane, Queensland  
**Solution:** Perimeter wellpoint dewatering system designed, supplied and installed to allow for basement excavation.  
**Equipment:** BBA silent self-priming pump packages, 100 x spear perimeter system, piping, hoses, valves and associated equipment.



### » Mine Dewatering

**Location:** Moranbah, Queensland  
**Solution:** Construct fit for purpose system, in yard system testing, deliver, install, commission, operate and maintain.  
**Equipment:** Fully automated 550hp diesel pumps, pontoon, remote telemetry, pipeline, hoses, flow meters and service vessel.



### » Assisted Evaporation

**Location:** Bowen Basin, Queensland  
**Solution:** Supply fully automated diesel powered evaporation system.  
**Equipment:** Fully automated evaporators, 550 and 330kVa super silenced generators, 75lt/sec pumps, starters, weather monitoring station, telemetry, pipeline and hoses.



PUMPS, POWER & COMPRESSED AIR **SOLUTIONS**

1800 737 687

[www.nationalpump.com.au](http://www.nationalpump.com.au)





## » PAST PROJECTS



### » Hydromining

**Location:** Kalgoorlie, Western Australia

**Solution:** Removal of tailings slimes from secondary settling dam. Design, complete product recovery, dam cleaning & reinstatement

**Equipment:** Remote controlled hydromining monitor, water winning pump system, booster pump, recovery pump, slurry pump and fuel cells.



### » Bore Pumping

**Location:** Kalgoorlie, Western Australia

**Solution:** Supply complete fully automated, self managed mill water supply system.

**Equipment:** 20lt/sec @ 12bar vertical inline pump units, 80kVa super silent generators, flow meters, pipeline, remote telemetry, floating pump stations and bulk fuel cells.



### » Power Generation

**Location:** Curtin Immigration Centre

**Solution:** To provide 2MW of power generation station for various facilities at the detention centre

**Equipment:** Various generator sets from 150kVA - 550kVA, bulk fuel cells, distribution boards, cabling and leads.



### » Oil & Gas

**Location:** Offshore

**Solution:** Design, engineer, construct, certify and operate water winning and pigging pump package.

**Equipment:** Diesel driven suction lift pumps feeding 950hp diesel power units driving high pressure multistage centrifugal pumps.



PUMPS, POWER & COMPRESSED AIR **SOLUTIONS**

1800 737 687

[www.nationalpump.com.au](http://www.nationalpump.com.au)





## »» COMMUNITY SUPPORT

National Pump & Energy are proud to actively support the local communities in which we live and work by providing support to numerous charities and local clubs.

- ✓ Wests Tigers Junior Rugby League Club
- ✓ Kalgoorlie Junior Golf Championships
- ✓ Rockingham Sharks Seniors Rugby League Team
- ✓ Joondalup Football Club
- ✓ Kawasaki MX Racing Team
- ✓ Perth PCYC Childrens Day Out
- ✓ Kalgoorlie Hockey Club
- ✓ Western Australian School of Mines
- ✓ Kalgoorlie College Football Club
- ✓ Junior UTV class @ CQBBBB



## »» MEMBERSHIPS, INSURANCE & ACCREDITATIONS

### MEMBERSHIPS

- ✓ Civil Contractors Federation
- ✓ Water Industry of Australia

### INSURANCES

- ✓ WorkCover
- ✓ Public Liability Insurance
- ✓ Professional Indemnity Insurance

### PRE-QUALIFICATIONS

- ✓ Achilles First Point Supplybase supplier

### LICENCES

- ✓ WA Electrical Licence



PUMPS, POWER & COMPRESSED AIR **SOLUTIONS**

1800 737 687

[www.nationalpump.com.au](http://www.nationalpump.com.au)



**HEAD OFFICE**

3A/6 Innovation Parkway  
Birtinya QLD 4575  
T 07 5438 4300  
E [admin@nationalpump.com.au](mailto:admin@nationalpump.com.au)

**BRISBANE**

32 Computer Road  
Yatala QLD 4207  
T 07 3382 0211  
E [brisbane@nationalpump.com.au](mailto:brisbane@nationalpump.com.au)

**DARWIN**

21 Beresford Road  
Yarrawonga, NT 0830  
T 1800 737 687  
E [darwin@nationalpump.com.au](mailto:darwin@nationalpump.com.au)

**KALGOORLIE**

39 Broadwood Street  
Kalgoorlie WA 6430  
T 08 9068 1000  
E [kalgoorlie@nationalpump.com.au](mailto:kalgoorlie@nationalpump.com.au)

**MACKAY**

24 Presto Avenue  
Mackay QLD 4740  
T 07 4998 9000  
E [mackay@nationalpump.com.au](mailto:mackay@nationalpump.com.au)

**NEWCASTLE**

4 Balbu Close  
Beresfield NSW 2322  
T 02 4088 0100  
E [newcastle@nationalpump.com.au](mailto:newcastle@nationalpump.com.au)

**PERTH**

276 Treasure Road  
Welshpool WA 6106  
T 08 6141 6500  
E [perth@nationalpump.com.au](mailto:perth@nationalpump.com.au)

**WEIPA**

12 Iraci Crescent  
Evans Landing QLD 4874  
T 1800 737 687  
E [weipa@nationalpump.com.au](mailto:weipa@nationalpump.com.au)

FREECALL 1800 737 687  
[WWW.NATIONALPUMP.COM.AU](http://WWW.NATIONALPUMP.COM.AU)



**NPE**  
NATIONAL PUMP & ENERGY

**Ready**  
**For Rent**